



# EASYFLEX

VIBRATION CONTROL FOR PUMPS





**Easyflex supports you to design and fabricate solutions for installation and commissioning of Pumps used for different applications.**

**CHILLED WATER PUMPS**

**CONDENSER PUMPS**

**DIESEL ENGINE PUMPS**

**CENTRIFUGAL PUMPS**

**SLURRY PUMPS**



**Easyflex is your single source for all types of Flexible Connectors and Vibration Isolators for Pumps that are used in the HVAC, Fire Fighting and Industrial sectors.**

**EXPANSION JOINTS**

**BASE FRAMES**

**SPRING ISOLATORS**

**SEISMIC ISOLATION**

**BRAIDED CONNECTORS**

**RUBBER PADS & MOUNTS**



# EXPANSION JOINTS & SEISMIC ISOLATION

Chilled Water Pumps are fitted with expansion joints at the Suction & Discharge to eliminate Water Hammer and compensate for Thermal expansion and contraction of piping.

Installed on top of an Inertia Base Frame (floating foundation) with Seismic Isolators and Snubbers to eliminate transmission of vibration to the structure.



**VIBRATION ELIMINATION  
EXPANSION JOINTS | SEISMIC ISOLATION**



# EXPANSION JOINTS

The Manufacturing process of Easyflex Expansion joints are in compliance with the **Expansion Joints Manufacturer's Association (EJMA)** and **Fluid Sealing Association (FSA)**.

Our In-house Validation and Software tools assist in the design and selection process according to application.



**FLUIDSEALING**



Rubber Expansion Joints 900NB designed and engineered for KSB Cooling Water Pumps



# EXPANSION JOINTS

Chilled Water Pumps fitted with **Easyflex Rubber Expansion Joints** (Single Arch) complete with Split Retaining Rings, Control Units and Tie Rod Assembly.

Several Parameters in consideration for selection of design and materials of construction

- **Application**
- **Design Temperature**
- **Design Pressure**
- **Flowing Medium**
- **Desired Movement Capability of the Flexible Element**



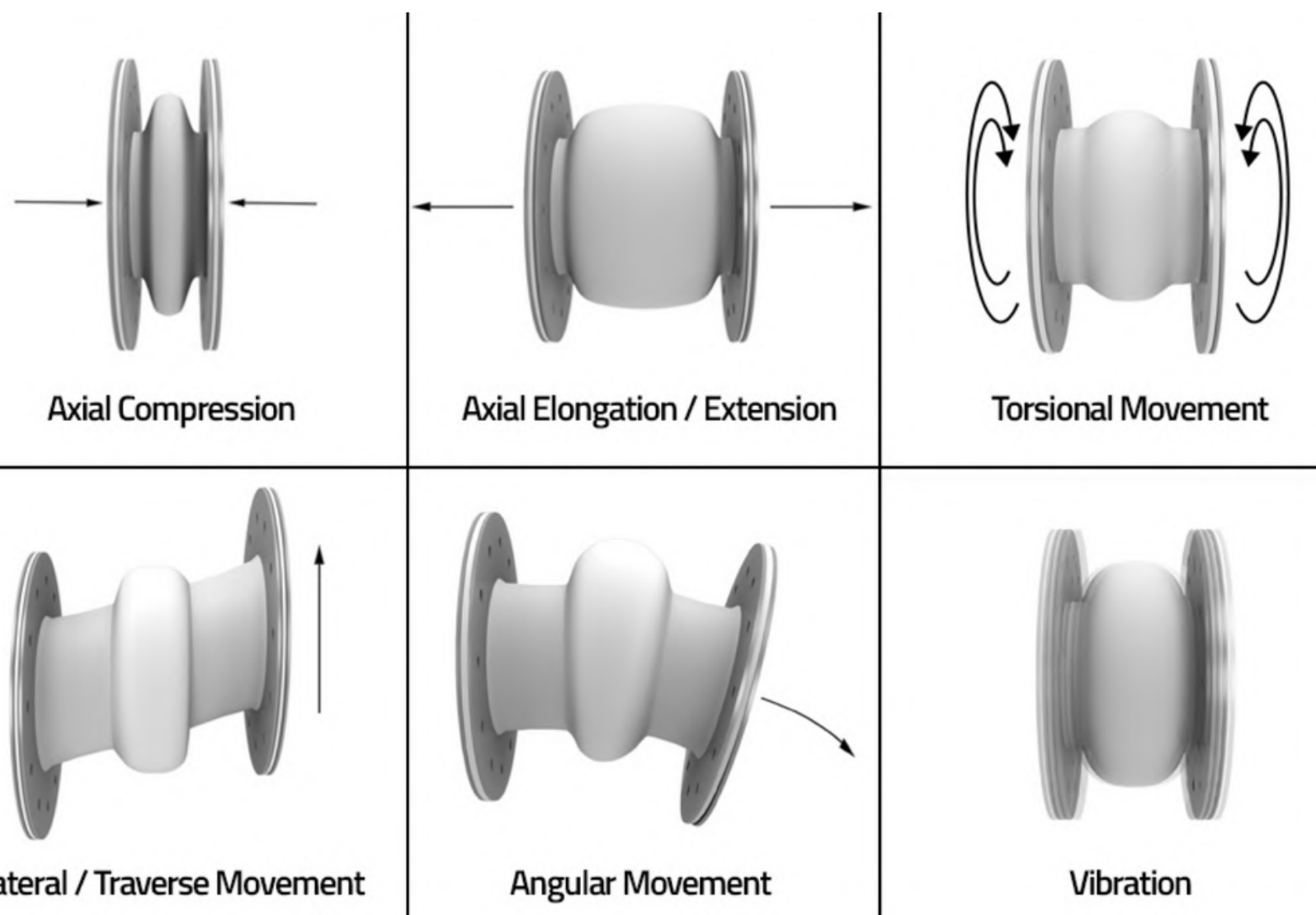
Rubber Expansion Joints installed at Pump Room of an International Airport



# EXPANSION JOINTS

Slurry Pumps fitted with **Easyflex Rubber Expansion Joints (Floating Flange Type)** complete with Control Units and Tie Rod Assembly.

Cooling Water Pumps are also major applications at Power Plants which are also fitted with Rubber expansion joints at the suction & discharge.





# INERTIA BASE FRAMES

Sumer Singh

● Active



Easyflex

Logout ▾

General

⚙ Dashboard

⚙ Selection Tools

🍪 Equipment ▾

🍪 Customer ▾

🍪 Projects ▾

## Inertia Base selection Tool

### Selection Tool

Inertia base Type

EFIB + EFOS ▾

Pump Make

Select ▾

Pump Model

Select ▾

Tag Number

Factor

Quantity

in Nos

Deflection

25 mm ▾

Calculate

### Inertia Base 3D Model



EASYFLEX INERTIA BASE SELECTION SOFTWARE

250+ PUMPS DATABASE | INSTANT SELECTION | INERTIA BASE & VIBRATION ISOLATION DESIGN REPORT

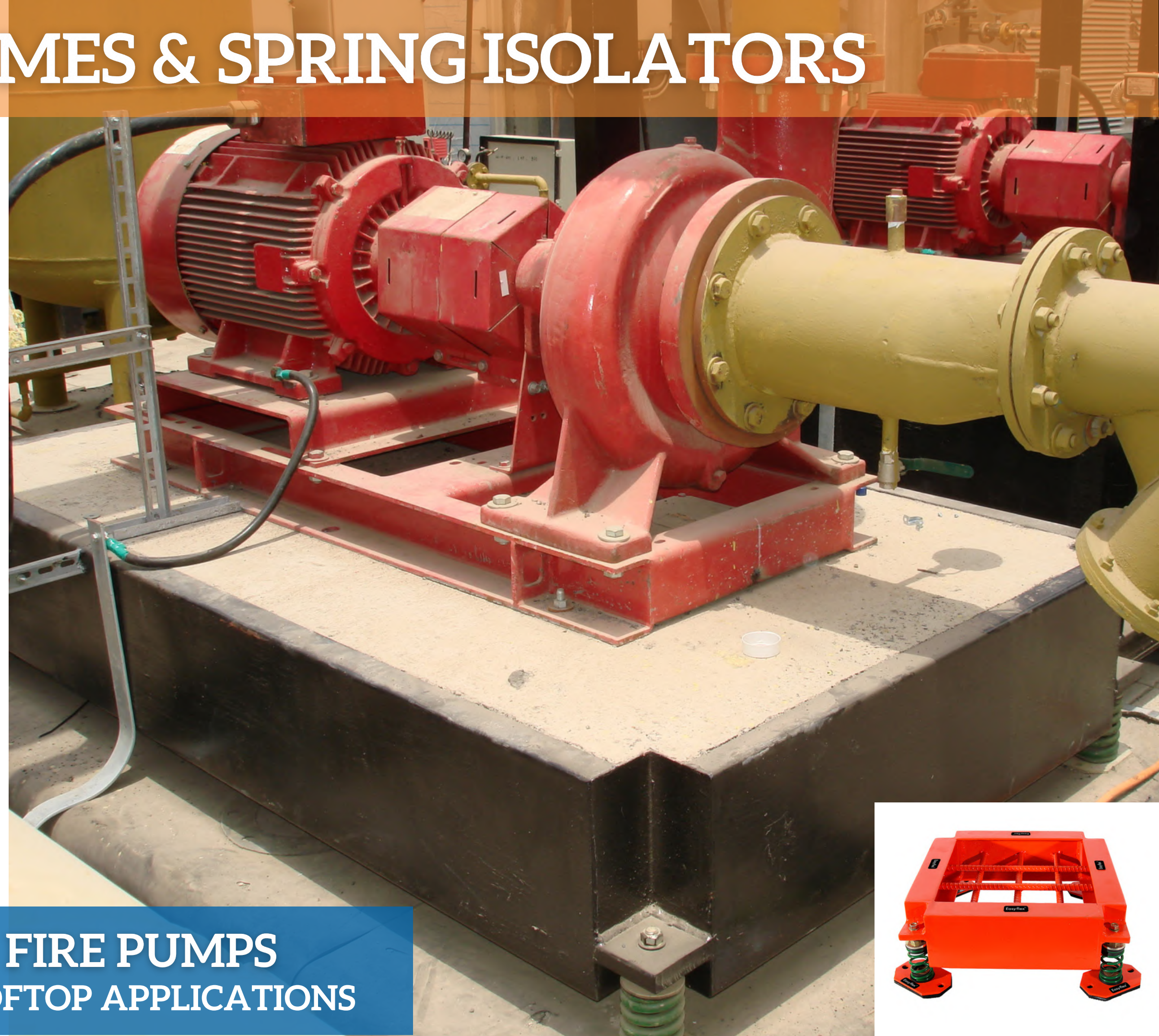


# INERTIA BASE FRAMES & SPRING ISOLATORS

Poured with **Concrete** and supported by **Noise & Vibration Isolators, Easyflex Inertia Base Frames** are floating foundations for **Pumps** and are totally isolated from the structure due to Air Gap.

## Easyflex Inertia Base Design Report

- Base Design Dimensions, Weights & Inertia
- Estimated Deflections
- Vibration Isolation Efficiency Calculation



**VIBRATION ISOLATION FOR FIRE PUMPS**  
**INERTIA BASE | SPRING MOUNTS | ROOFTOP APPLICATIONS**

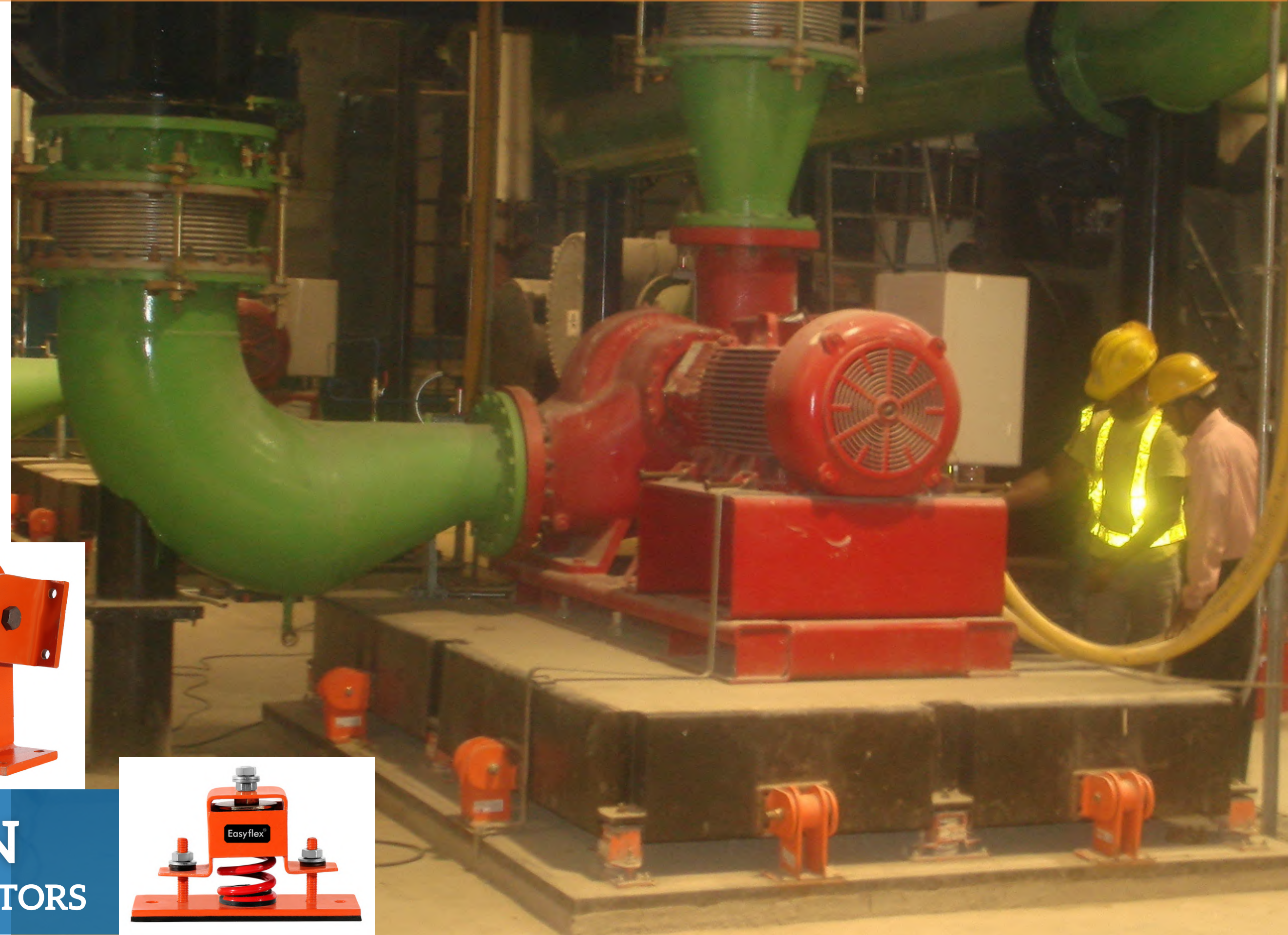




# INERTIA BASE FRAMES & SEISMIC ISOLATORS

Easyflex Seismic Isolation Range is suitable for project specifications that require installation of equipment with seismic provisions.

Chilled Water Pumps are mounted on **Easyflex Inertia Base Frame** along with **Seismic Snubbers** and **Restrained Spring Isolators**.



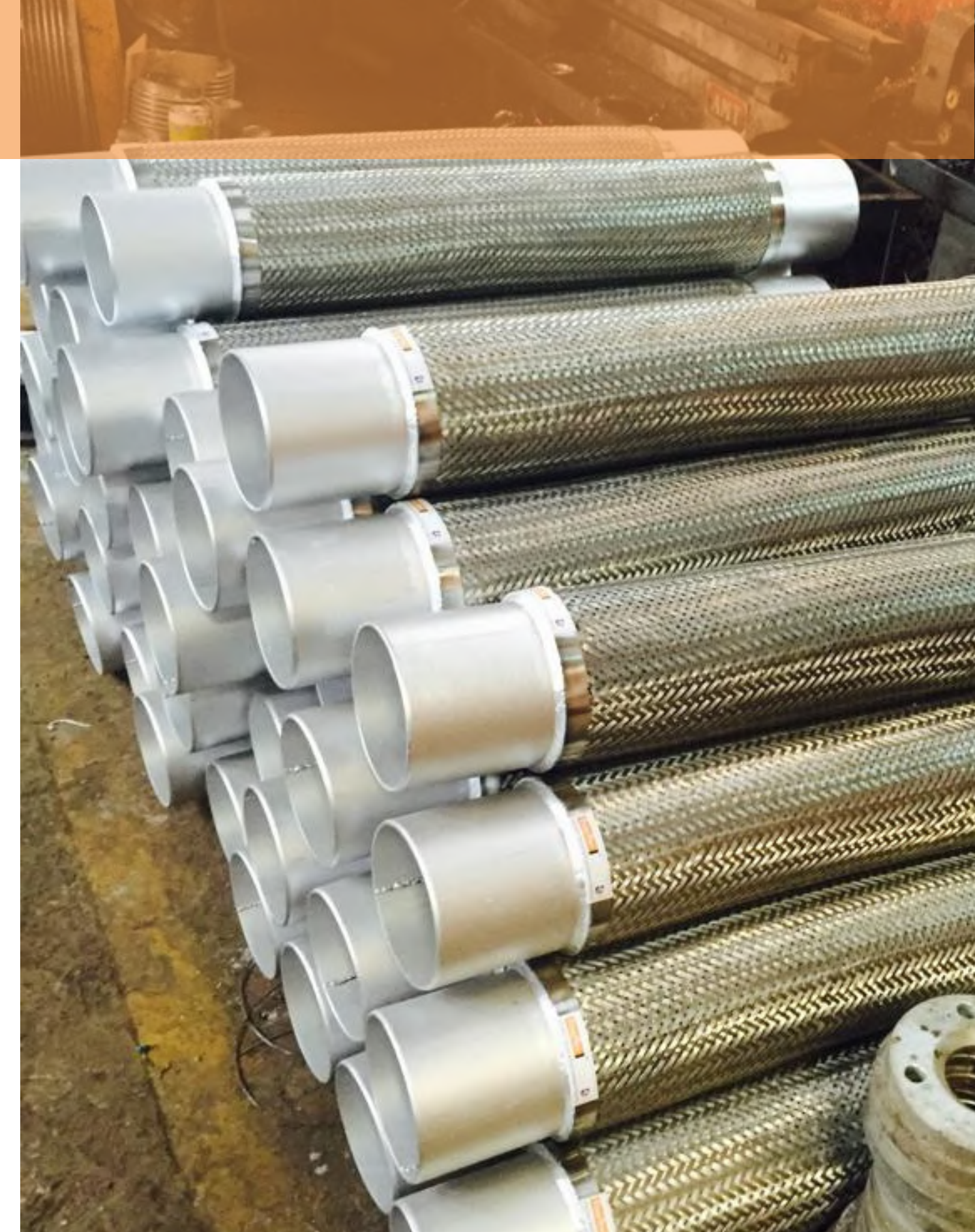
**SEISMIC ISOLATION**  
SNUBBERS | RESTRAINED ISOLATORS



# PUMP CONNECTORS

Corrugated Metallic Hoses with Stainless Steel braiding with custom end fittings are fabricated as Flexible Connections for

- **Pumps**
- **Fan Coil Units**
- **Air Handling Units**
- **Steam Generation**



**FLEXIBLE BRAIDED CONNECTIONS**  
SS304/316/321 | SINGLE / DOUBLE BRAIDING





**Round Mount**



**Neoprene Grommet Mount**



**Cork Sandwich Pad**



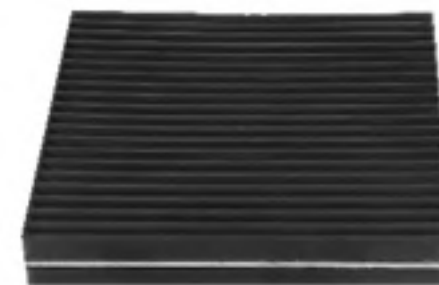
**EASY MOUNT**



**Waffle Pad**



**Ribbed Mounting Pad**



**Metal Sandwich Pad**



**TURRET MOUNT**

**VIBRATION ISOLATION**

**RUBBER / RUBBER TO METAL BONDED MOUNTS | SUITABLE FOR MECHANICAL EQUIPMENTS**





Expansion Joints & Braided Connectors for associated piping of Pumps

Inertia Base Frames with Vibration & Seismic Isolators

Rubber Based Anti Vibration Mounts & Pads

Easyflex